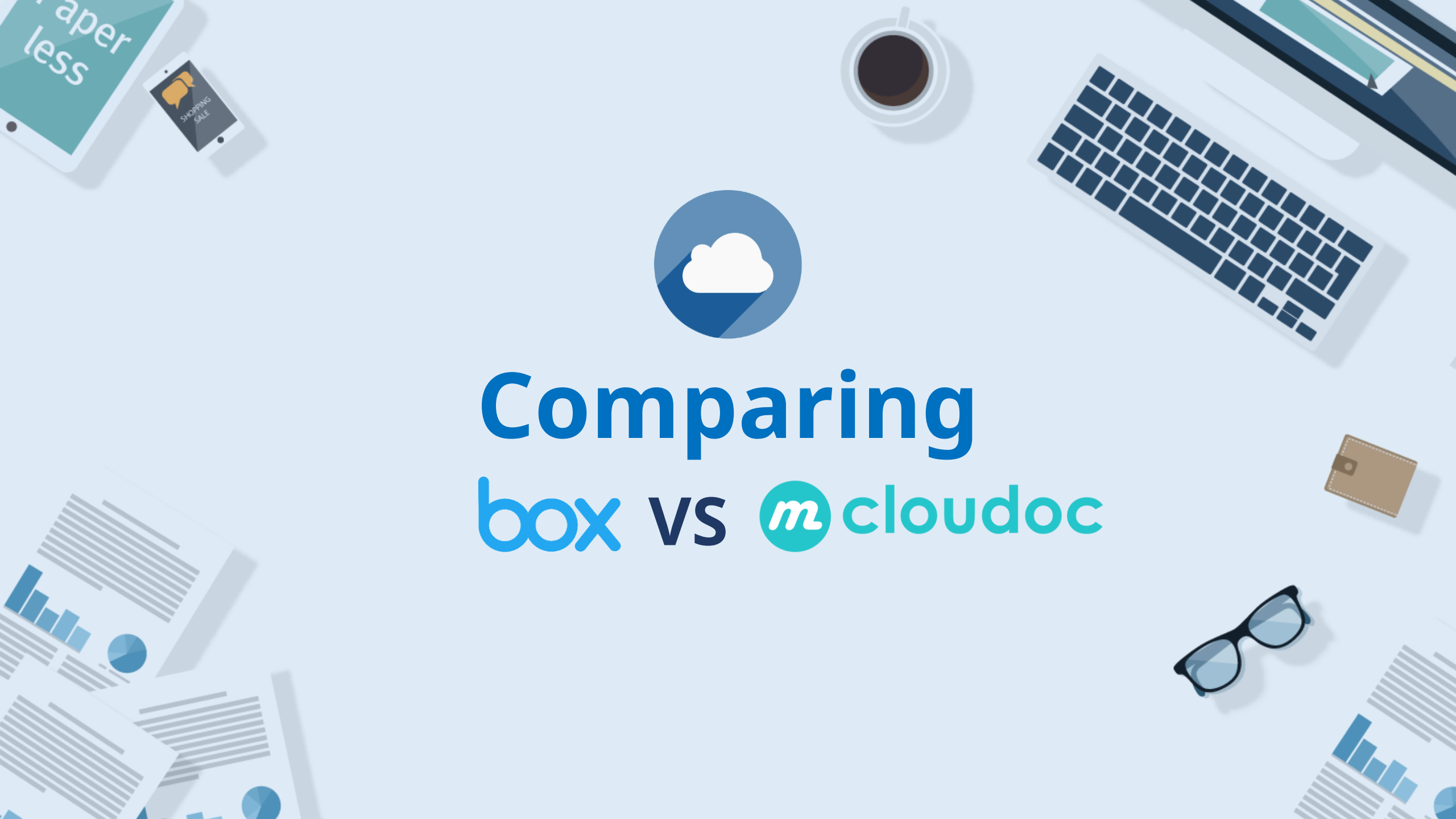




Comparing box vs mcloudoc



Compare Box & mcloudoc



Website
(Initial release)

<http://www.box.com>
(2005)

<http://www.mcloudoc.com>
(2003)

Introduction

Box Inc. (formerly Box.net) is an online file sharing and Cloud content management service for enterprise companies.

mcloudoc is a document centralization service for enterprise companies. It provides document security & management service at the same time.

Price

Starter : 6,980 Won/User
Business : 19,770 Won/User
Business Plus : 33,725 Won/User

5 Users : 22,500 Won/User
50 Users : 20,850 Won/User
100 Users : 19,200 Won/User
(Plus Initial Security Policy Setup Fee)

Pricing Type

Monthly Payment

Monthly Payment

Compare Box & mcloudoc



Storage Space

Starter : 100GB(2GB file size limit)
Business : unlimited(5GB file size limit)
Business Plus : unlimited(5GB file size limit)

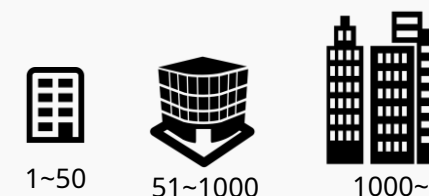
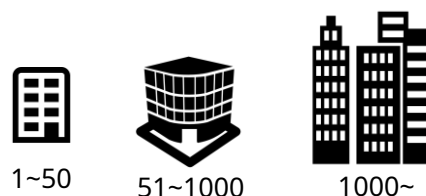
50GB(file size unlimited)
Can buy more storage space.

Prominent Customers

GE, Nationwide, Gap,
Boston Scientific

SK Telecom, Samsung Card,
LG Electronics, Lotte Shopping

Target Customer Size



Deployment



Cloud SVC.



On Premise



Cloud SVC.

Compare Box & mcloudoc

box

mcloudoc

Operating System



Supported File Systems



MAC File System
will be
supported
In 2018



Mobile Compatibility



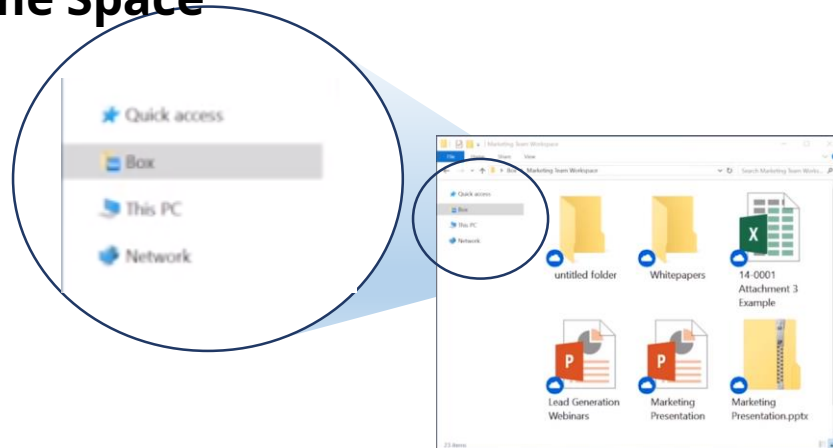
Other User Interface



1. Window Explorer Support



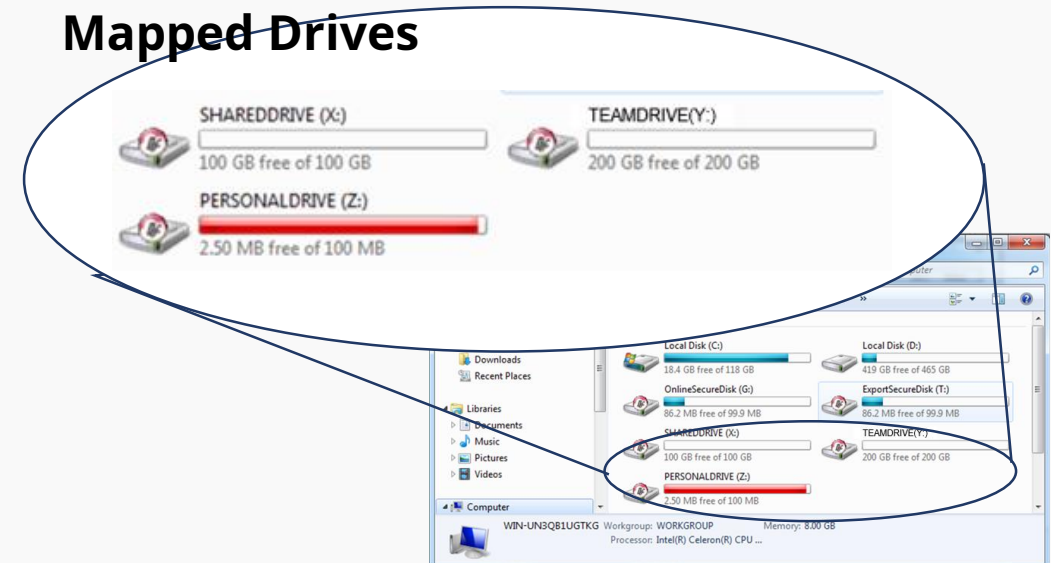
Name Space



- Open/Save/Save As – Not allowed for applications
- Inter-docs link in excel files not supported
- Video link in PPT files not supported
- 3D CAD files not supported
- Very slow because of file download
- Big video files should be downloaded first before playing



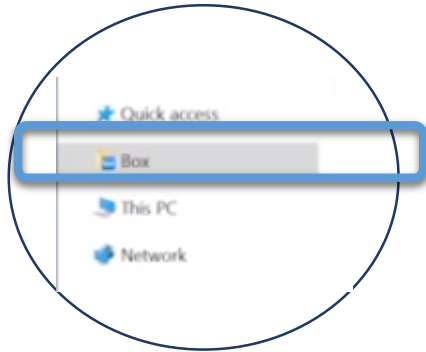
Mapped Drives



- Directly accessible file system
(No file copy to local disk)
- Easy to use, fast and flexible
- Compatible with most of existing applications
(But, simultaneous file editing is not allowed through the Internet)

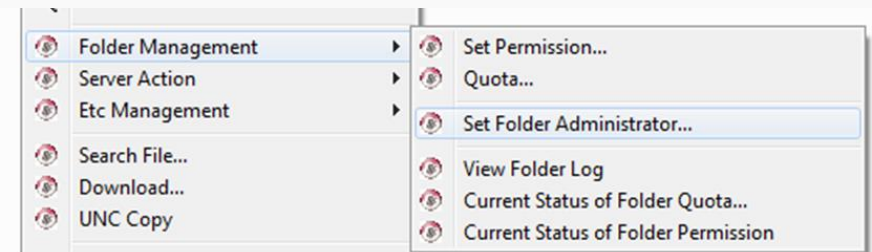
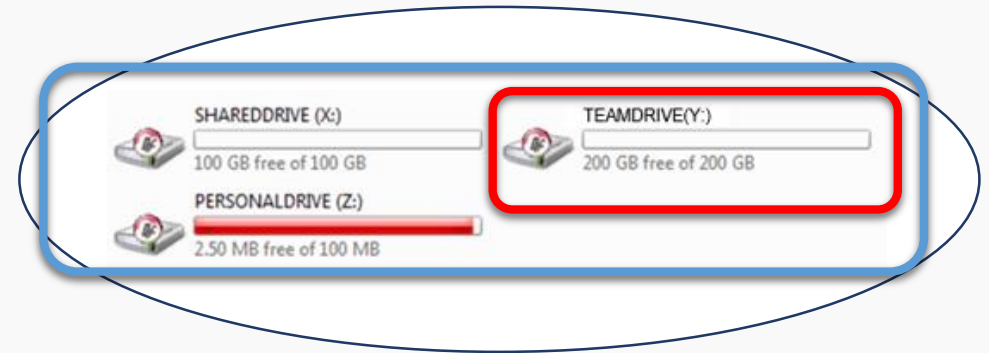
2. Team Space

box



No Team Space

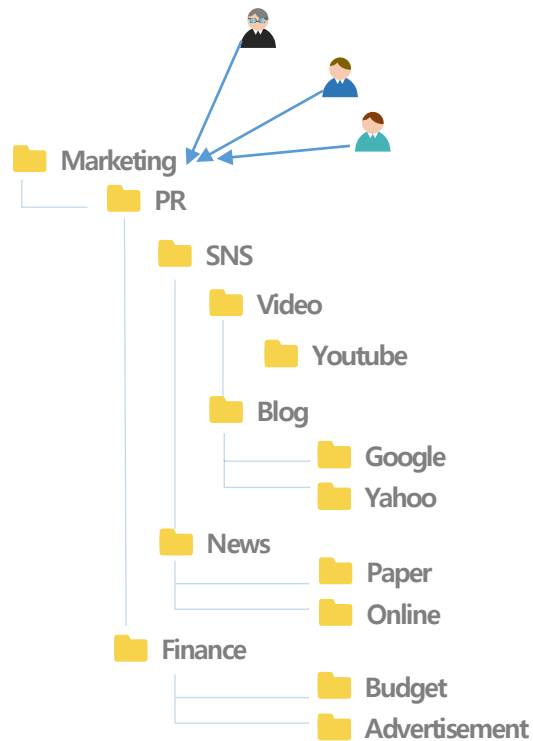
mcloudoc



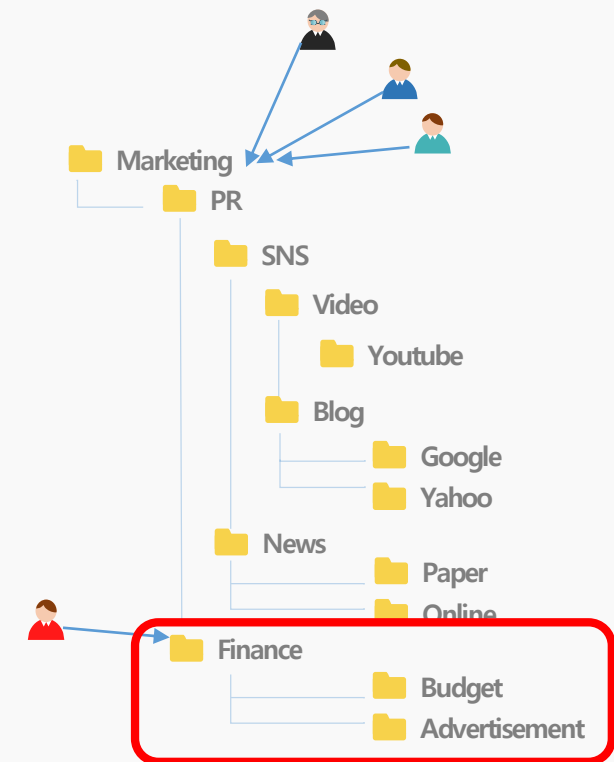
Team Space

- Folder access control list
- Folder quota
- Sub folder manager

3. Granular Access Control

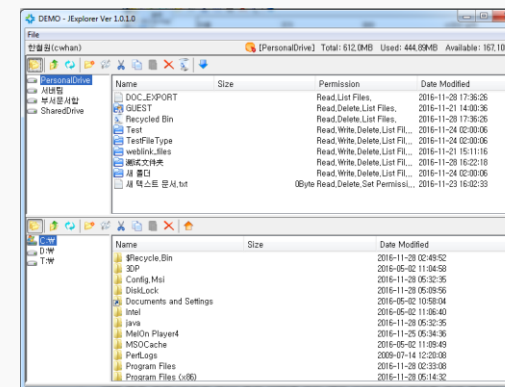


Any user who has access to the Marketing parent folder would automatically have access to all its sub-folders.

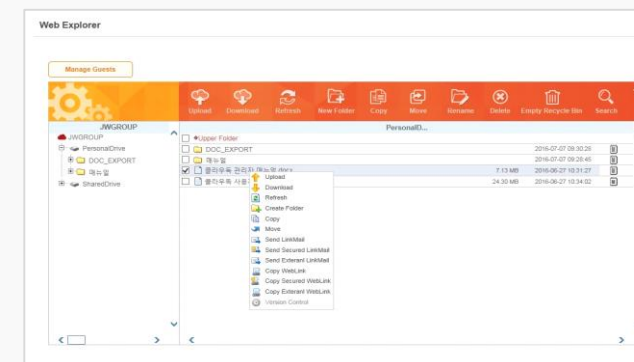


Even though you have permission on Parent folder, you need to get permission for any sub folders.

NETIC
Internet Solution Company

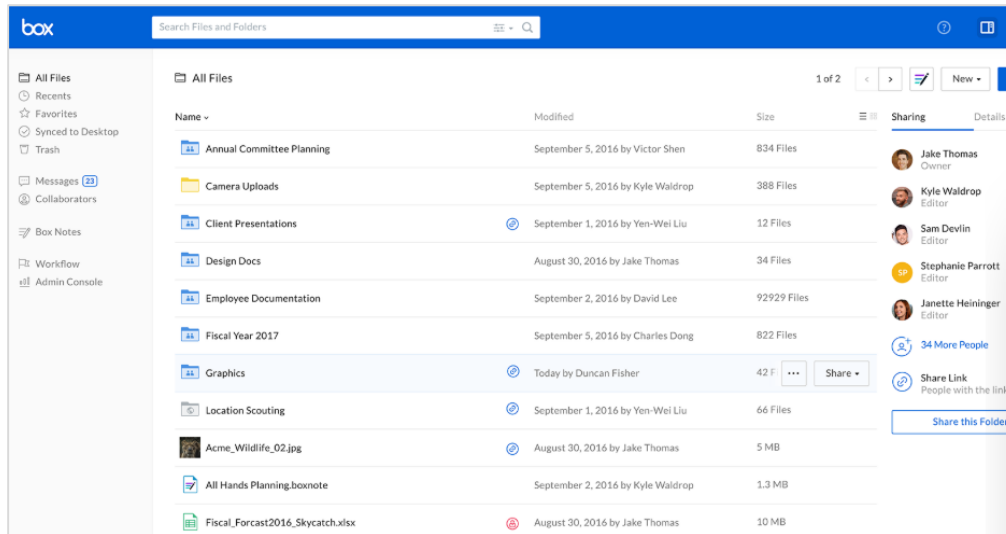


Java Explorer

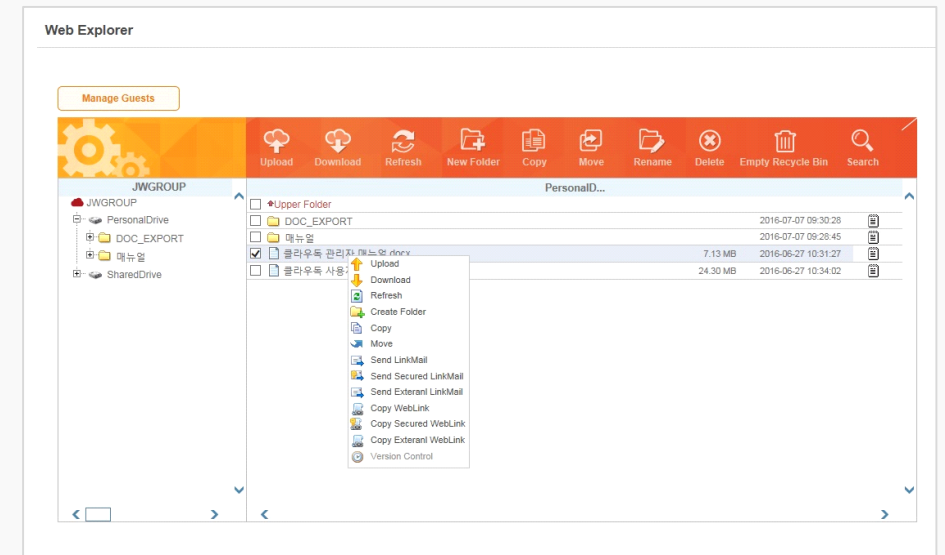


Web Explorer

5. Web Explorer



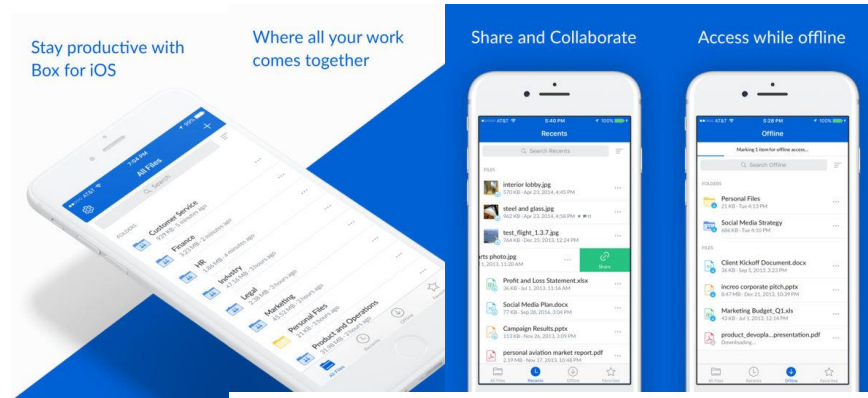
Web Explorer is BOX's main UI



Web Explorer is mcloudoc's ancillary UI

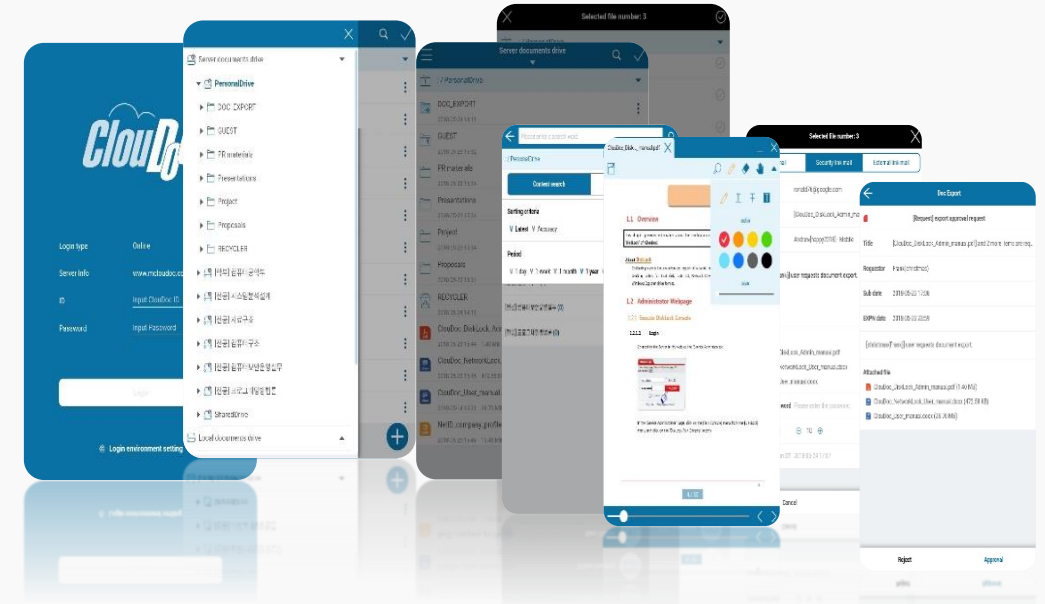
6. Mobile UI

box



- Share huge files with just a link
- Box Notes- for taking notes and working in real time with others
- Add comments to documents to leave feedback
- Real-time search
- Search within PDF, PowerPoint, Excel, Word docs

m cloudoc

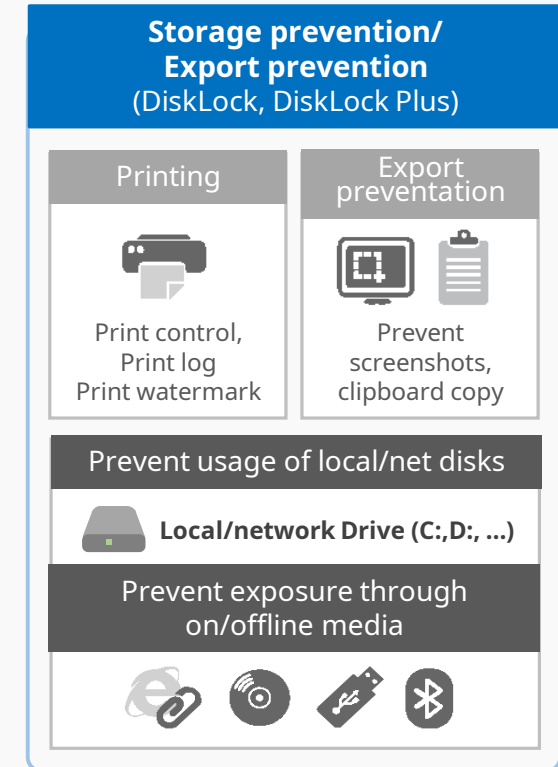


- Login via proxy server from outside
- Document link
- Draw and write with ink in Office docs
- Document export req/response
- File Search
- Event Push

7. Endpoint Security



Symantec or other endpoint security product is needed.



Complete set of built-in endpoint security functions

8. Other functions



- Box Notes : Real-time online note-taking for teams
- Box Security : Compliance, Privacy, ...
- Box Governance : Data protection for the digital age
- Box Relay : Workflow made simple
- Box KeySafe : Manage your own encryption keys
- Box Skills : Bring intelligence to all your content



- PC backup : backup all your PC files to server
- Push service : Push events to devices
- Network Lock : malicious code prevention by network separation.
- External Document Exchange Service
- PCLOG : log local disk io events
- External DRM : send encrypted files to partners
- Secure Viewer : View only without downloading documents
- Personal Information Security : scan, show and act for personal information files
- Backup appliance or Backup online : backup all documents stored in server.